

# Amsterdam acquires a beautiful school building

## A new old school building for the Dr. Rijk Kramer School

Kodde architecten BNA

in cooperation with

Martijn van der Hijden architecten

At the beginning of school year 2010 the new school building of the Dr. Rijk Kramer School, an annex of the school a bit further along the Nassaukade, has been put into use. The renovated old school building shines and is peaceful and spacious.

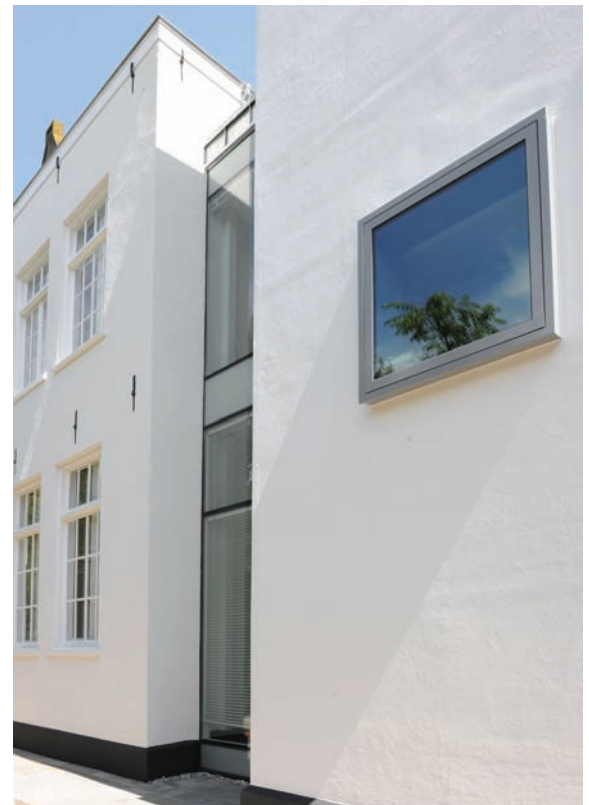
Within the space of a year, the building at number 42 Van Oldenbarneveldtstraat has been renovated completely and has been expanded with a modern 4 storey extension at the back of the building. Originally the building was a school, built during the development of Amsterdam, when school buildings were built on various locations along the city walls. The building was designed in 1884 as a girls' school, a new educational facility in the Frederik Hendrik district (which borders on the areas Jordaan and West).

Over the past decades several communal services occupied the building, such as the GGD (municipal health services) and a day nursery. Each of them made their own changes to the original building.



Now that more families with children have moved into the neighbourhood, there was renewed demand for extra school space. Urban District West conducted a feasibility study to see if they could reuse the building as a school, that way giving it back its original function: a primary school for boys and girls.

In 2007 Urban District West bought the building and asked the architectural firm Kodde Architecten to create a design for the renovation and expansion of the building.



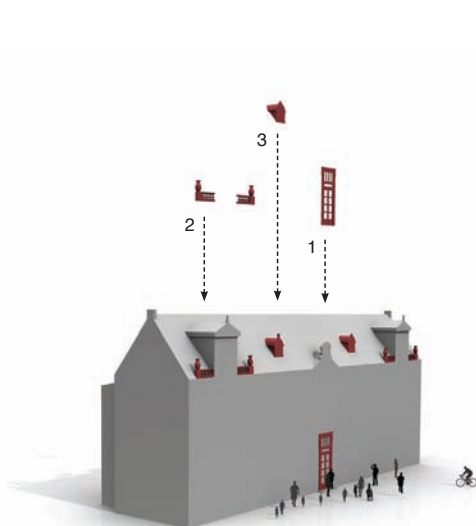


## Design

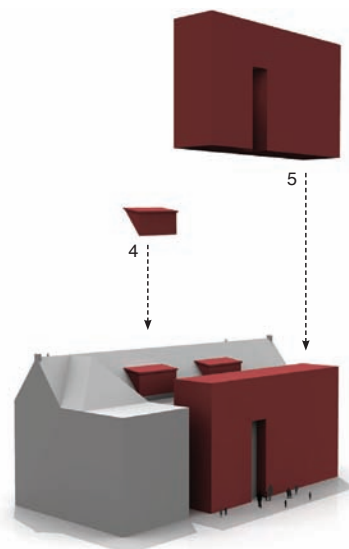
To meet the needs of a modern primary school and extracurricular school care, the design consisted of a renovation of the existing building and a modern extension at the back of the building.

Frank de Wit, principal of the Dr. Rijk Kramer School: “We now have a beautiful annex to our school on the Nassau-kade. Kodde Architecten together with our school team have managed to make the most out of the desired needs and budget, keeping in mind the eventual use of the building. Children need space and peace, a place to learn and play, and that worked out really well. We are very pleased and proud.”

A remarkable element of the restoration and renovation is the combination of traditional materials and modern techniques and materials. De Wit: “This has led to lovely contrasts in the reuse of an existing building.”



Front facade



Back facade

## Adjustments:

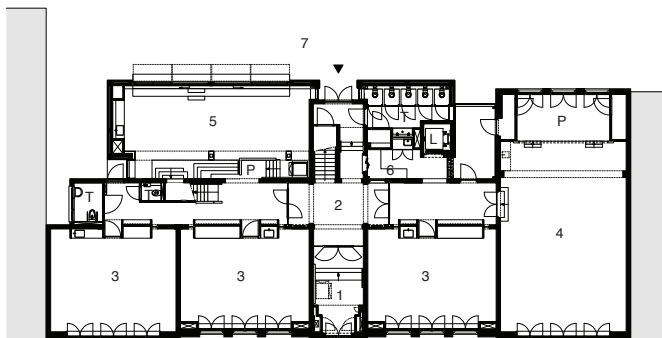
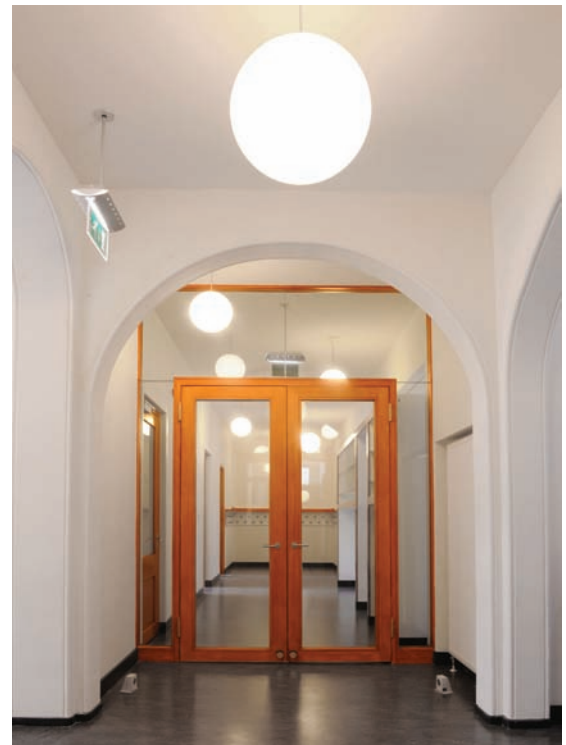
1. front door
2. ornaments
3. bullseyes
4. dormers
5. classrooms + facilities



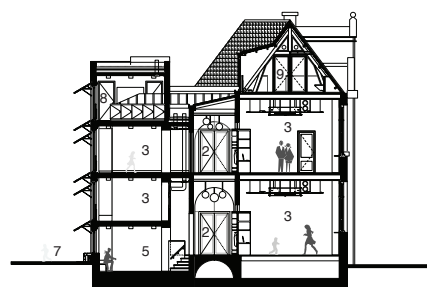


## Old

In the existing building the original purpose was recovered as much as possible. The old corridors, for example, with their high ceilings and arches were restored to their original state and made visible again. And the front door with the entrance stairs has been repositioned centrally again. At the front, the missing attics with vase ornaments have reappeared next to the dormers, with two bulls eyes in the dormers. A nice detail is that the bulls eyes now serve a new purpose: they have become the air inlets for the class rooms. The attic, with two dormers for extra daylight, can now be used for administrative jobs and offices and meeting rooms for employees.

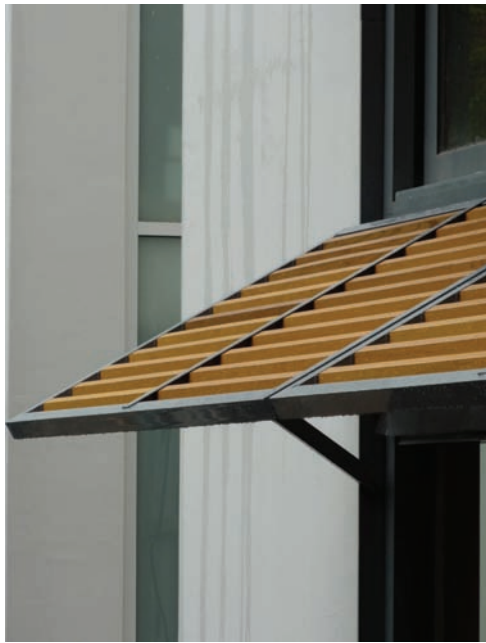


Plan



Section

1. entrance hall
2. corridor
3. classrooms
4. play/ gym room
5. pre school area
6. concierge
7. play ground
8. musical classroom
9. management and board rooms
- T. closets
- L. elevator
- P. stage



*Portfolio manager educational housing Godfried Lambriex of Urban District West: "This complex project shows that through good team work and expertise of the parties involved, theme's such as renovation of an historic building, durability and educational housing can be integrated and can result in a satisfactory end result. A school building that gives the user pleasure to use is a welcome addition to the neighbourhood."*

*"Integrating the current functional demands in an old building is complex and is one of our strengths", says architect Jorrit Mulder. "The complete renovation of an old school building which had not been used for that purpose for a long time, is already a special assignment. The combination with the narrow new building within the inner urban Amsterdam context made this school a fascinating architectural assignment which we developed together with architect Martijn van der Hijden."*



## New

The new building at the back consists of a narrow block plan of four floors, developed in a contemporary way. To emphasize the difference it has been divided from the old building by means of glass strips. The new part has an elevator and has four extra classrooms, areas for remedial teaching and internal coaching, areas for storage and the server and toilets for the children. The new part is connected to the back of the central staircase in such a way that you can still see the old façade.

The four classrooms are situated on top of each other and on each floor large sliding doors provide maximum daylight. When the weather is good the classrooms can be opened fully, similar to the former open air schools. The awnings are made of wood and give the classrooms an intimate character – a nice contrast to the more formal character of the old classrooms.

## Interior

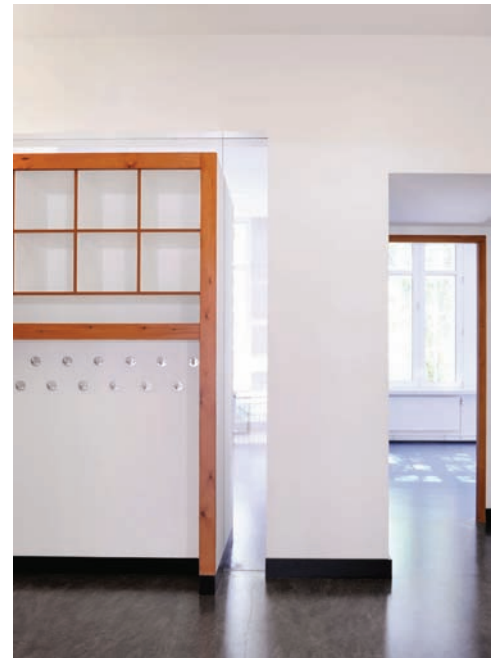
Architect Jorrit Mulder of Kodde Architecten: "In a design, the routing and usage needs must correspond. The interior design results from that: we look at the interior as a whole with the total design. We are not style architects, each project deserves a new interpretation. Our client must feel comfortable with the work we are going to realize, but we will not shy away from a challenge and will also ask our client to look outside the comfort zone. We do the contract supervision for all projects ourselves, we conduct the construction from the initiation phase until delivery. This is getting more and more rare in our line of business, but it makes it possible to deliver the best results for our client."

## Stairs

The building has two new staircases, two distinctive elements in the building. The stairs bridge the differences in height of the old and the new building and also ensure that the old attic with the monumental roof becomes part of the building.





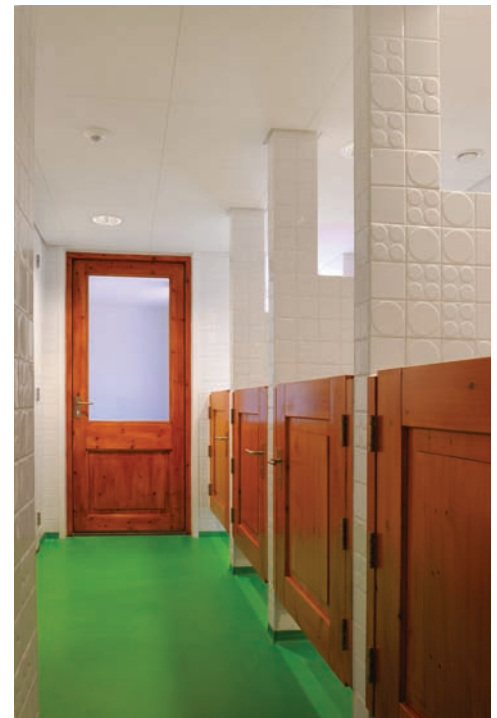


### Closets

A clever invention are the prominent closets, which can be used on both sides of the corridor and classroom. The closets are clever all-in-one pieces of furniture: they accommodate the coat-stands, computer workstations, wash basins and the classroom cupboards. Extra light comes into the corridors through a glass strip, giving a good view of the corridors and classrooms.

### Colour

The high black skirting and spherical hanging lamps in the corridors, the solid wood finishing of the stairs, doors, furniture, and the high spaces breathe the atmosphere of the old school. The animal prints on the glass windows of the classroom doors, the playfully designed toilets, the vistas and the various links between the old and the new building give the whole place an accessible character, which suits the new use of the building as a primary school.



### Durable

The result is very special: a durably developed building in which all modern usage demands go together with the original building of a school. Client and architect are very proud of the end result.



“The cooperation with the architects went very smoothly”, says Frank de Wit, principal of the Dr. Rijk Kramer School. “During the realisation of this dream school, within the context of the possibilities and constraints of an existing building, we quickly came to a shared vision. Our team, consisting of parents, school team and management, was very able to convey our ideas for the modern and attractive school. A magnificent design, that matches with our demands and the educational concept, was realised. And furthermore it provides for future expansion.

A beautiful facade and the grand entrance of the building are an indication of the quality we would like to realise for our education. A school where kids, school team and parents form a strong school community, with excellent educational results, both cognitive and creative.”  
On October 20th 2010, the school was officially and festively opened.

For more information about the renovation and new building of the school please contact  
Kodde Architecten,  
Jorrit Mulder +31 (0)20-4282700,  
mulder@koddearchitecten.nl

Or have a look at:  
[www.koddearchitecten.nl](http://www.koddearchitecten.nl) and  
[www.martijn.hijden.com](http://www.martijn.hijden.com).



## Project data

Client	Stadsdeel West, Amsterdam
Design	Kodde Architecten BNA in cooperation with Martijn van der Hijden architecten
Project architects	Hans Kodde, Martijn van der Hijden, Jorrit Mulder
Staff members	Manon de Bont, Alexander van Rath, Desiree Stamrood
Contractor	Bruns Bouw BV
Installation advisor	Brocken Raadgevende Ingenieurs
Design engineer	Duyts Bouwconstructies BV
Installations	Centragas van Galen, Bennink Klimaattechniek
Total gross floor area	1400 m2
Gross floor area new building	400 m2
Gross floor area old building	1000 m2
Programme primary school	9 group rooms, employee room, play ground, pre school area, musical classroom, management and board rooms
Start of the assignment	end of 2007
Start building	July 2009
Delivery	July 2010
Building costs incl. installations	€ 2.500.000, - excl. VAT